

THREADED BODY CYLINDERS

with internal stroke limiter, without/with wiper, single-acting, pmax. 500 bar

Description:

These screw-in cylinders are a space saving solution as clamping and gripping cylinders. Suitable as a construction module for a wide variety of tasks. This cylinder is for example also ideally suited for press clamping devices

The cylinder distinguishes by its compact construction. Due to the internal stroke limiter, the cylinder can also be operated without counter clamping. The piston rod end is crowned.

Operating conditions:

The screw-in cylinder operates hydraulically only single-acting. As a result, only definite extraction times are given.

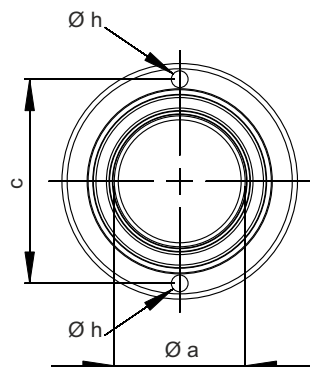
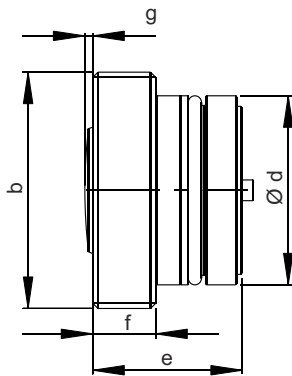
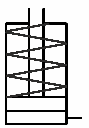
The reset is effected by means of a built-in compression spring. For that reason, the reset time cannot be precisely determined.

Hydraulic oil is supplied through drilled channels.

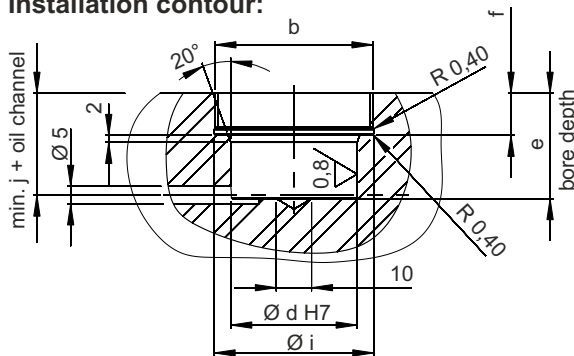


Webcode: 021001

We also design and manufacture special designs



Installation contour:



Notice:

After the cylinder has been installed, it is to be secured in the thread M45x1.5 by means of a threaded pin M4x6.

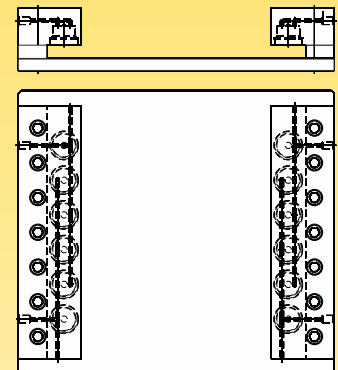
The scope of supply includes this threaded pin with internal hexagon and chamfer point.

Advantages:

- ☒ Fully retractable housing
- ☒ With internal stroke limiter
- ☒ With or without wiper
- ☒ Oil supply without piping

Application example:

A hydraulic quick-acting clamping fixture with 12 threaded body cylinders. This is clamped onto a standardized clamping edge thickness of 20 mm. The clamping bars are supplied by a dual-circuit hydraulic clamping system. This means that in the event of a pressure drop in one clamping circuit, the clamping effect is maintained by the second clamping circuit until the machine stops. Each of the clamping circuits must be secured by a hydraulically releasable check valve.



Technical data:

a Piston Ø:	[mm]	20	25	32
Clamping force 100 bar	[kN]	3,1	4,9	8
Clamping force 500 bar	[kN]	15,7	24,5	40,2
Maximum oil capacity	[cm³]	1,25	1,95	6,45
Stroke	[mm]	4	4	8
b		M38x1,5	M45x1,5	M56x1,5
c (with wiper)	[mm]	34	39	48
c (without wiper)	[mm]	30	35	44
d Ø	[mm]	30	36	44
e	[mm]	25	30	42
f	[mm]	10	12	12
g (with wiper)	[mm]	1,5	1,5	1,5
g (without wiper)	[mm]	-	-	-
h Ø	[mm]	2x 2,5	2x 3,5	2x 4,0
i Ø	[mm]	38,5	45,5	56,5
j	[mm]	24,5	29,5	41,5
Order no.				
without wiper	EZY-EM...	-20-004-AP-100	-25-004-AP-100	-32-008-AP-100
with NBR ⁽¹⁾ wiper	EZY-EM...	-20-004-AP-200	-25-004-AP-200	-32-008-AP-200
with FKM ⁽¹⁾ wiper	EZY-EM...	-20-004-AV-200	-25-004-AV-200	-32-008-AV-200
Threaded pin M4x6	7004-005			

⁽¹⁾Operating temperature: NBR -10° up to +80°C, FKM up to max. 150°C



Siemensstraße 16, 35325 Mücke (Germany)
 Phone: +49 6401 225999-0
 Fax: +49 6401 225999-50
 E-mail: info@hydrokomp.de
 Internet: www.hydrokomp.de